



# *The Aging Workforce*

*April 7, 2011*

*Desiree Phair*

*Regional Labor Economist, Seattle-King County*

*Employment Security, LMEA*

# ***Population by Age***

# Percentage of Population by Age



**Comparison of Population by Age, 2010**

	<b>U.S. (2009)</b>	<b>State</b>	<b>King</b>
<b>0-4</b>	6.9%	6.6%	6.1%
<b>5-9</b>	6.6%	6.5%	5.9%
<b>10-14</b>	6.7%	6.5%	5.3%
<b>15-19</b>	7.1%	6.9%	6.0%
<b>20-24</b>	7.0%	7.2%	7.8%
<b>25-29</b>	7.0%	7.3%	8.4%
<b>30-34</b>	6.5%	6.6%	7.0%
<b>35-39</b>	7.0%	6.6%	7.3%
<b>40-44</b>	7.3%	6.8%	7.5%
<b>45-49</b>	7.6%	7.4%	7.6%
<b>50-54</b>	7.0%	7.3%	7.4%
<b>55-59</b>	6.0%	6.7%	6.7%
<b>60-64</b>	4.8%	5.6%	5.6%
<b>65-69</b>	3.6%	3.9%	3.7%
<b>70-74</b>	2.9%	2.7%	2.4%
<b>75-79</b>	2.4%	2.0%	1.8%
<b>80-84</b>	1.9%	1.6%	1.5%
<b>85 +</b>	1.8%	1.8%	2.0%
<b>0-19</b>	27.3%	26.4%	23.3%
<b>20-39</b>	27.5%	27.7%	30.5%
<b>40-59</b>	27.9%	28.2%	29.2%
<b>60+</b>	17.4%	17.6%	17.0%

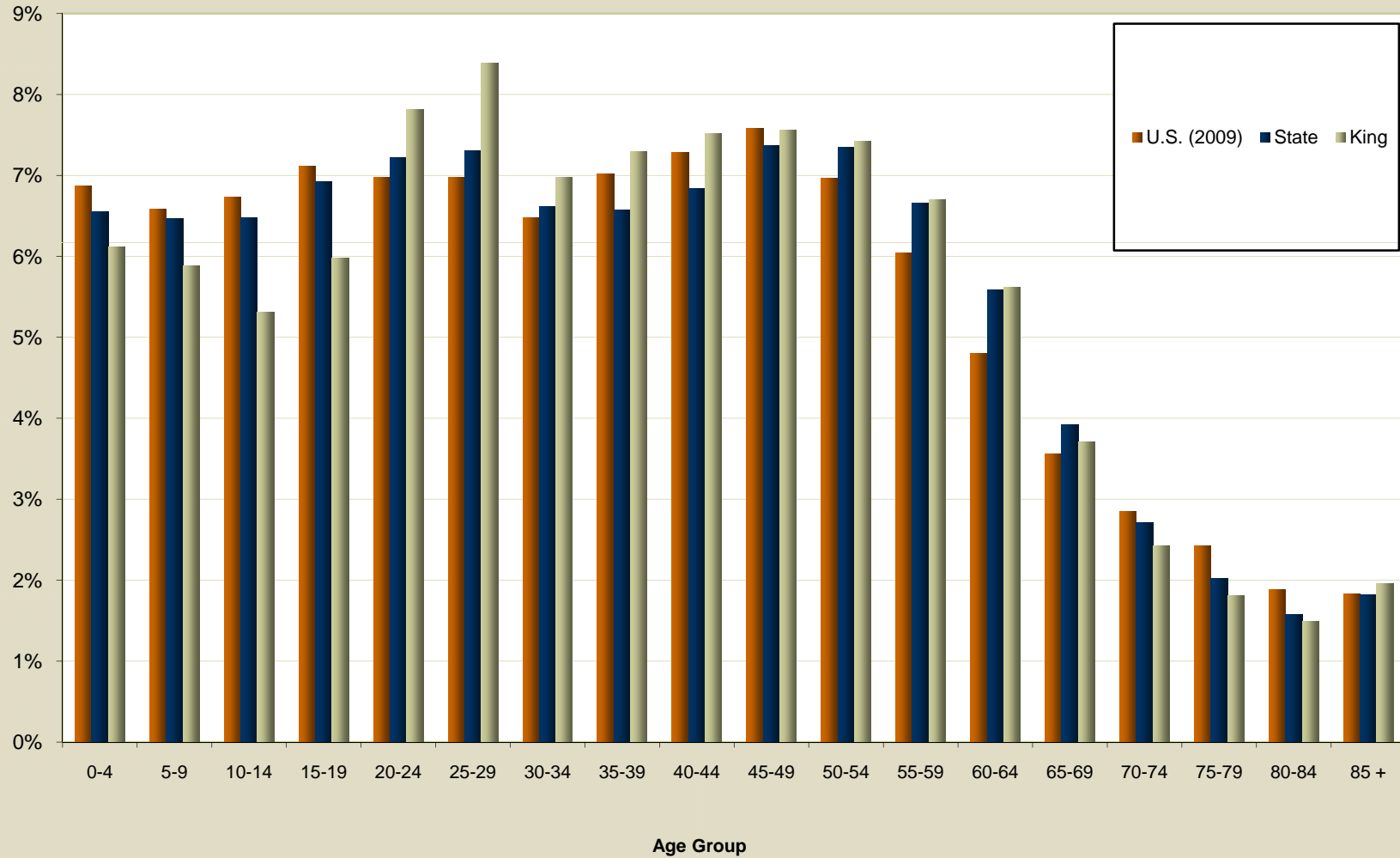
**Data Source:**

Washington Office of Financial  
Management, U.S. Bureau of  
Economic Analysis

# Percentage of Population by Age



Percent of Population by Age Group, 2010



Data Source: Washington Office of Financial Management, U.S. Bureau of Economic Analysis

# King County Projected Percentage of Population by Age



## King County, Current and Projected Population

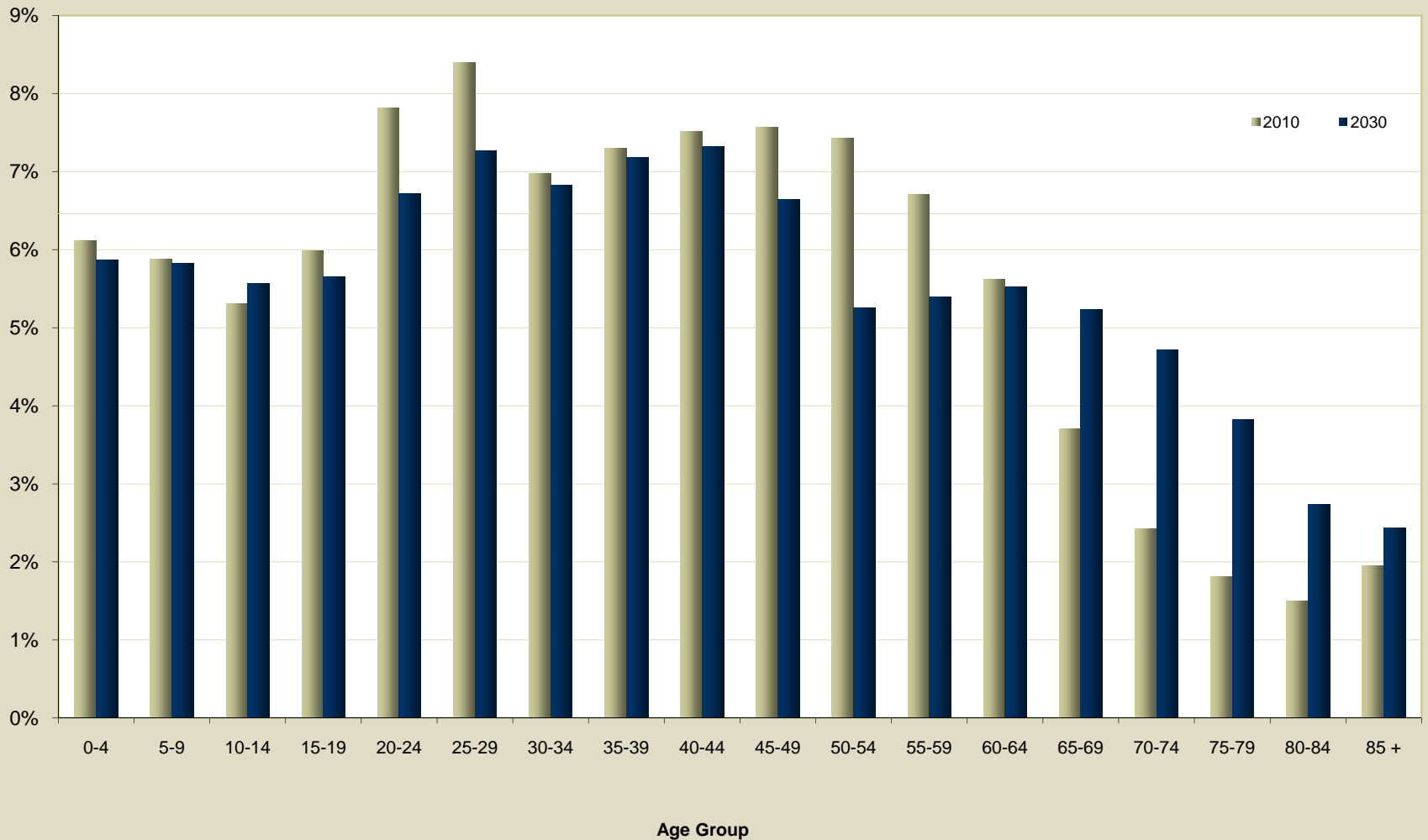
	2010	2030
0-4	6.1%	5.9%
5-9	5.9%	5.8%
10-14	5.3%	5.6%
15-19	6.0%	5.7%
20-24	7.8%	6.7%
25-29	8.4%	7.3%
30-34	7.0%	6.8%
35-39	7.3%	7.2%
40-44	7.5%	7.3%
45-49	7.6%	6.6%
50-54	7.4%	5.3%
55-59	6.7%	5.4%
60-64	5.6%	5.5%
65-69	3.7%	5.2%
70-74	2.4%	4.7%
75-79	1.8%	3.8%
80-84	1.5%	2.7%
85 +	2.0%	2.4%

**Data Source:**  
 Washington Office of Financial  
 Management, U.S. Bureau of  
 Economic Analysis

# King County Projected Percentage of Population by Age (2010 v 2030)



Percent of Population by Age Group, Current and Projected King County



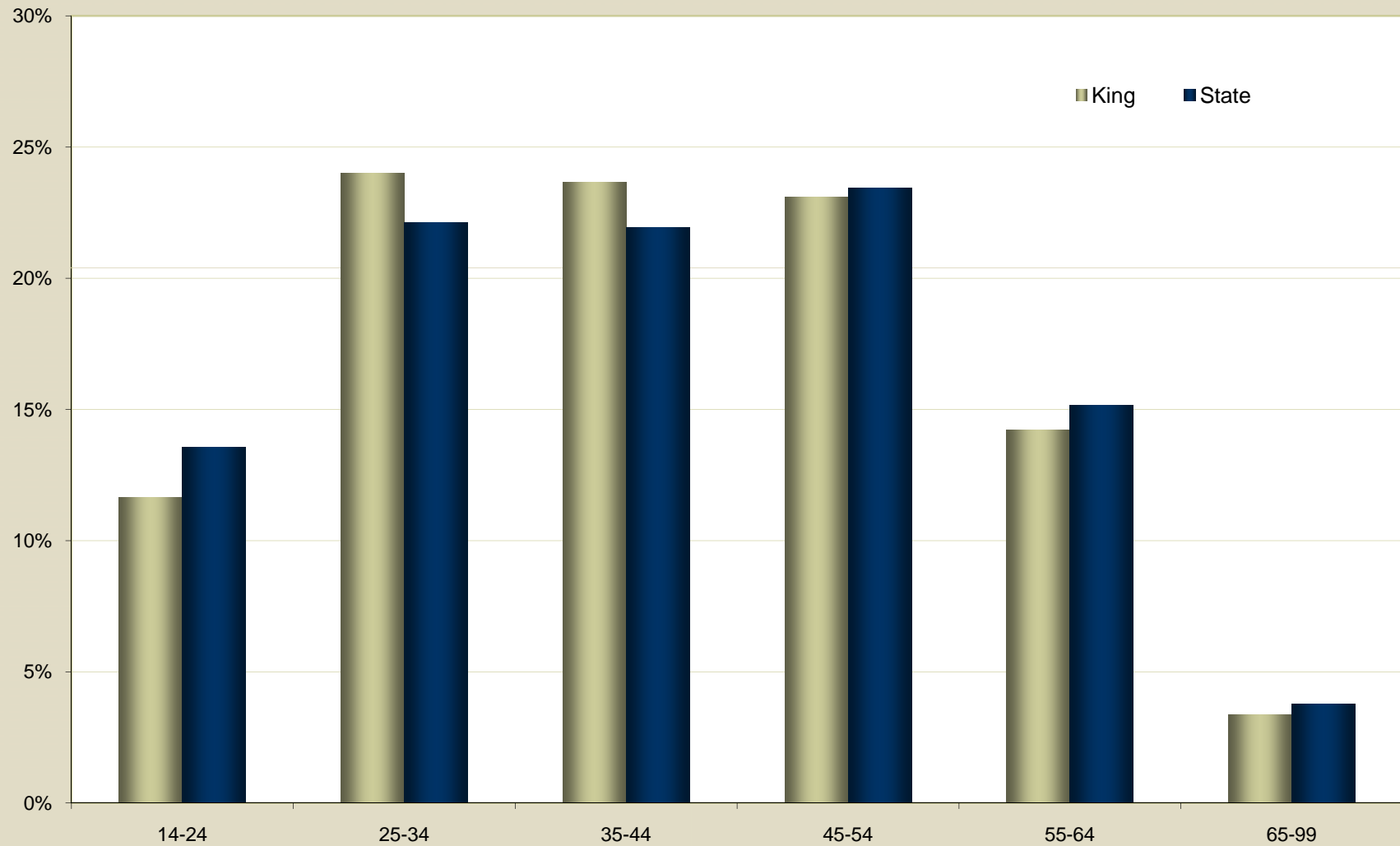
Data Source: Washington Office of Financial Management, U.S. Bureau of Economic Analysis

# ***Workforce by Age***

# Workforce Age Distribution (King v State)



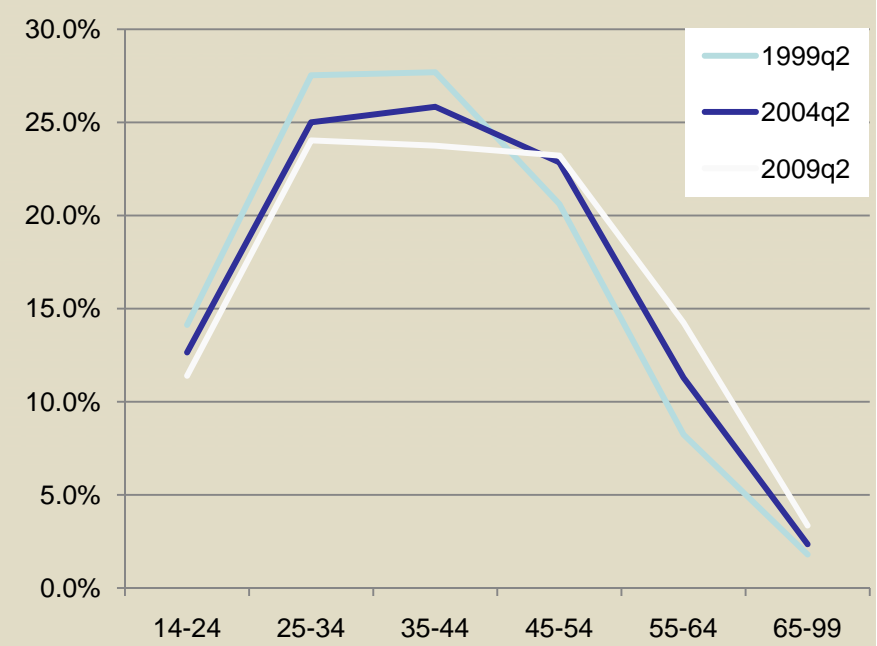
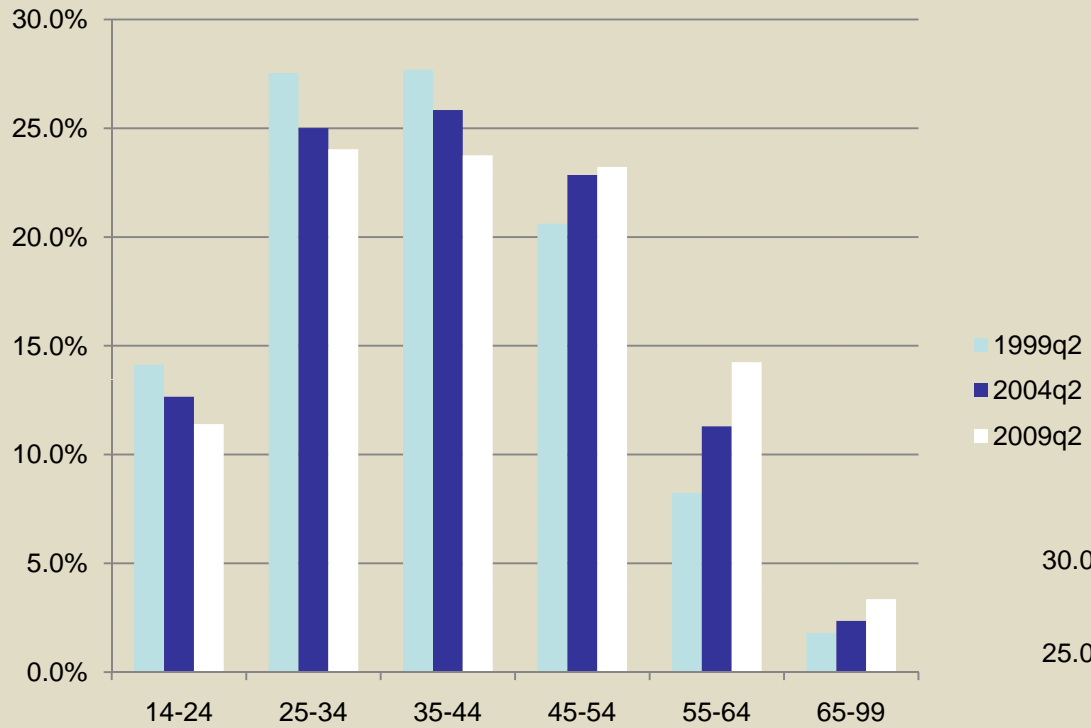
Percent of Jobs by Age of Jobholder, 2009



Data Source: WA Employment Security Department, US Census Bureau



# Workforce Age Distribution Over Time (King County)



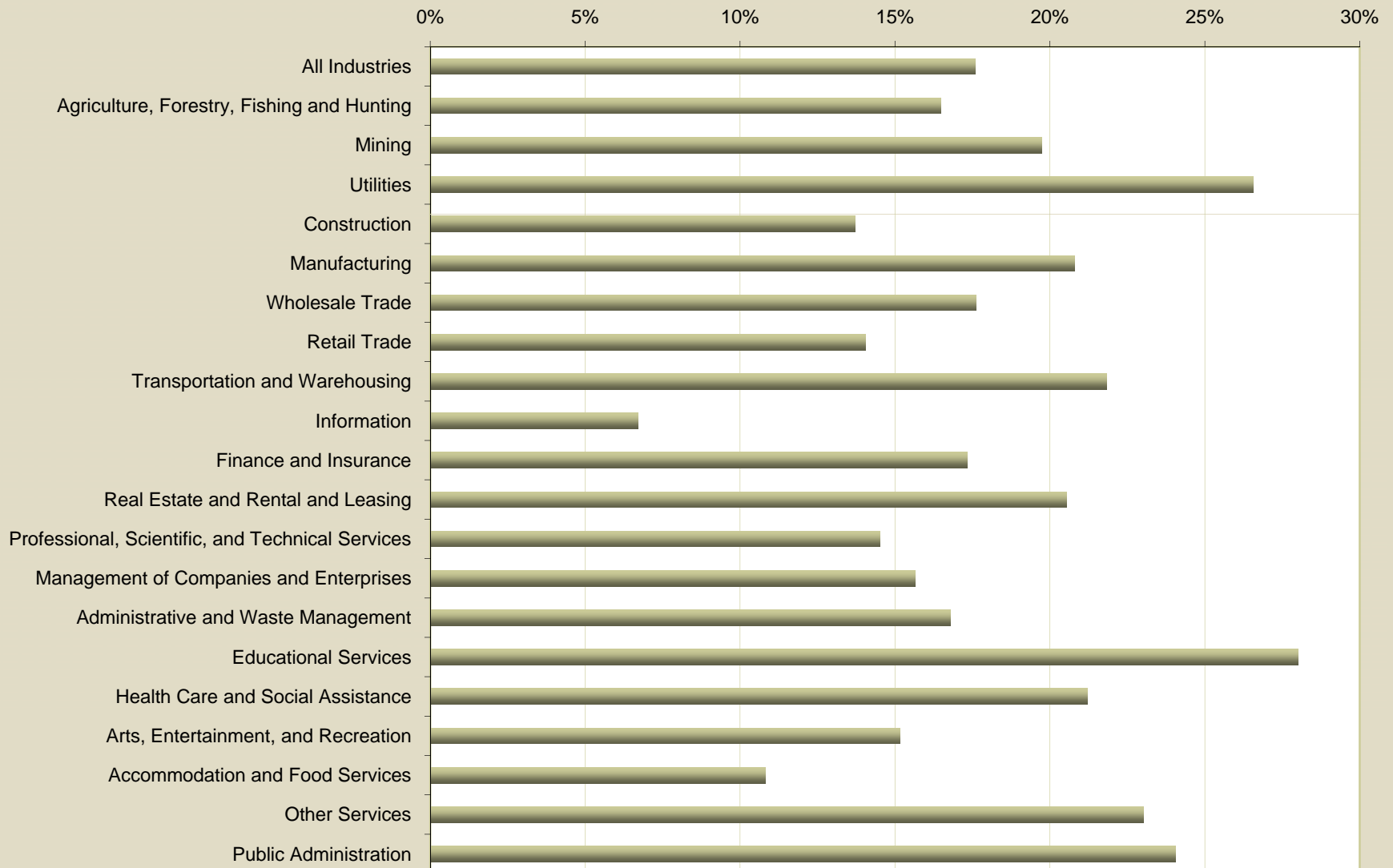
Source: WA Employment Security Department,  
US Census Bureau

# Workers 55+ by Industry (King County)



Percent of Jobs Held by Workers Age 55+  
King County, 2009

Source: WA Employment Security Department, US Census Bureau





***Desiree Phair***  
***Regional Labor Economist, Seattle-King County***

***2003 Western Ave., Suite 250***  
***Seattle, WA 98121***

***206-448-0474 x3073***  
***[dphair@esd.wa.gov](mailto:dphair@esd.wa.gov)***